

# Connecting Viva controller to Bathyllogger Echo Sounders

## CS10/CS15 Settings

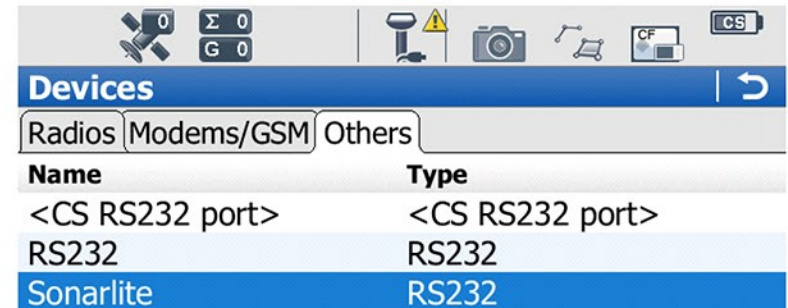


# Connecting Viva controller to Bathylogger

## CS10/CS15 Settings

The new device will appear.

14. Press F1 'OK'.



# Connecting Viva controller to Bathylogger

## CS10/CS15 Settings

15. For 'End of message' choose  
'CR/LF' (do not press OK yet)

(15.a If using Bluetooth, press

F4 'Search', identify the

Bathylogger and press F1 'OK' to accept the device)

ASCII Input

ASCII input Annotation 1 Annotation 2 Annotation 3

☒ Receive ASCII data via a device

Connect using: CS RS232 port

Device: Sonarlite

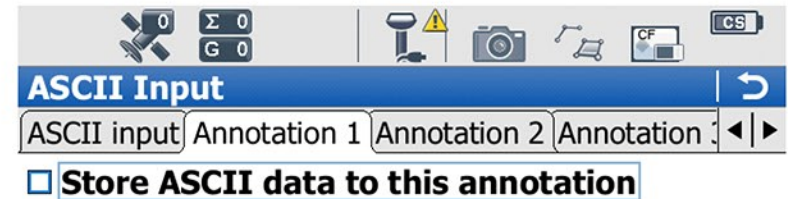
End of message: CR/LF

OK | | | | Device.. | Page

# Connecting Viva controller to Bathylogger

## CS10/CS15 Settings

16. Press F6 and page to the tab  
'Annotation 1'.



17. Tick the box 'Store ASCII data..'.



# Connecting Viva controller to Bathylogger

## CS10/CS15 Settings

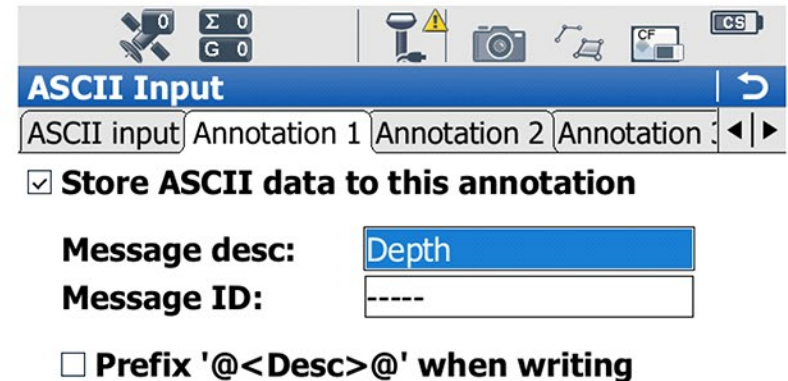
18. In the 'Message desc' box,  
enter a description, eg 'Depth'.

Use the prefix option to select specific  
data from the output string.  
Example: "Depth in feet only"

19. Press F1 'OK'.

20. Press F1 'OK' again to return to  
the opening screen... and you have finished.

You can now use the 'Star' (favourites) key, scroll down to 'Hot  
Keys..' and select 'GPS – ASCII Input Status' on a hot-key to view  
the incoming depth data at any time.



ASCII Input

ASCII input Annotation 1 Annotation 2 Annotation 3

☒ Store ASCII data to this annotation

Message desc: Depth

Message ID: -----

☐ Prefix '@<Desc>@' when writing



Fn abc 10:13

OK | | | | Page



# Connecting Viva controller to Bathylogger

## CS10/CS15 Settings - Introduction

The new Leica Geosystems Viva CS10 and CS15 controllers can be connected to an Echo Sounder by Bluetooth or by serial cable. The Bathylogger has both bluetooth and serial options.

This slideshow covers the use of serial cable connection to the Bathylogger (the process is the same), and also the minimal extra steps to use the Bathylogger with Bluetooth.

For CS10 and CS15 datalogger, the correct Leica cable to use is the GEV 162, connected to the Bathylogger serial cable with Green connector.

# Connecting Viva controller to Bathylogger

## CS10/CS15 Settings

1. Switch on, choose GPS,  
and go to main screen.

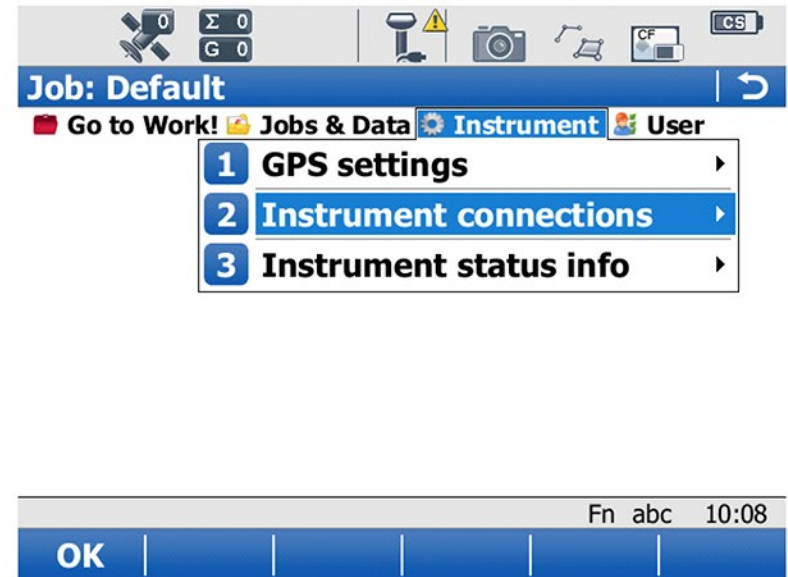
2. Highlight option 3, Instrument.



# Connecting Viva controller to Bathylogger

## CS10/CS15 Settings

3. Choose option 2,  
'Instrument connections' (or  
'Connect to Instrument'  
if using icons)

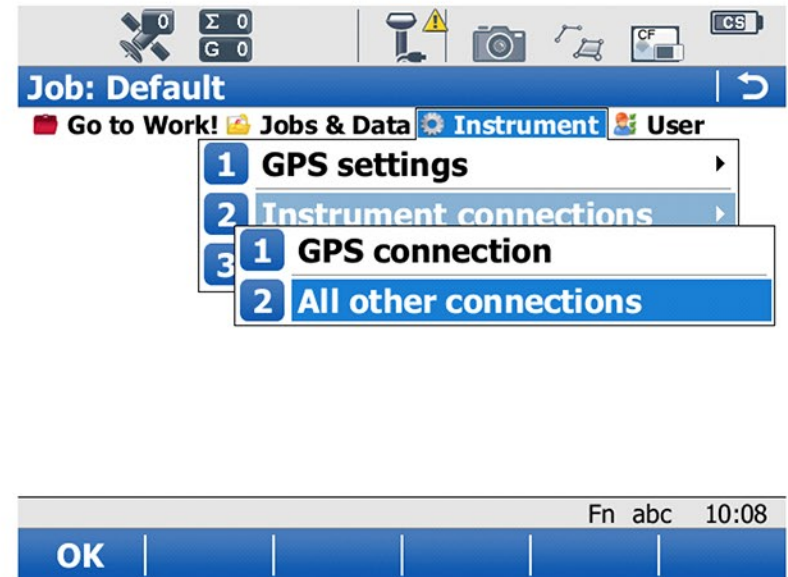




# Connecting Viva controller to Bathylogger

## CS10/CS15 Settings

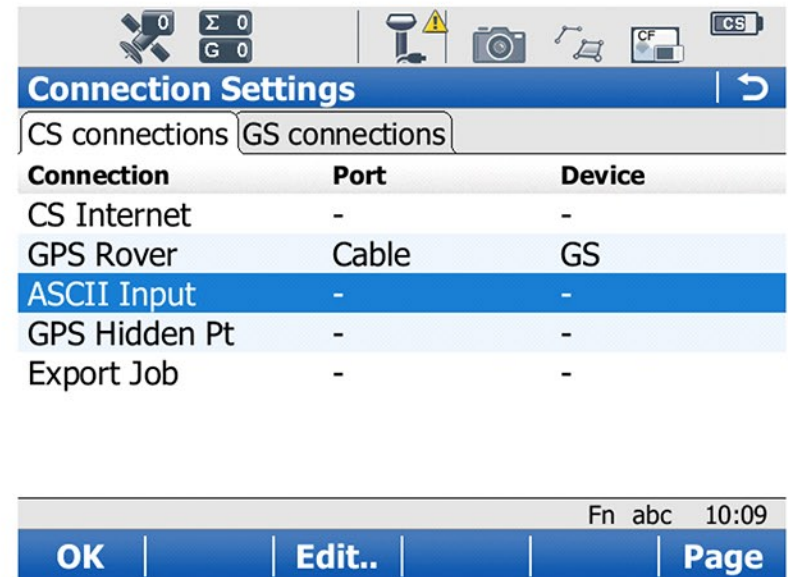
4. Choose option 2,  
'All other connections'



# Connecting Viva controller to Bathylogger

## CS10/CS15 Settings

5. Highlight 'ASCII Input',  
then Press F3, 'Edit'.



# Connecting Viva controller to Bathylogger

## CS10/CS15 Settings

6. Tick 'Receive ASCII data..'

7. At 'Connect using',

Choose 'CS RS232 Port'.

(7a. To use the Bathylogger  
via Bluetooth, select an unused  
'CS Bluetooth' port)

8. Press F5 'Device'.

ASCII Input

ASCII input Annotation 1 Annotation 2 Annotation 3

☒ Receive ASCII data via a device

Connect using: CS RS232 port

Device: TPS1200 Cable

End of message: CR

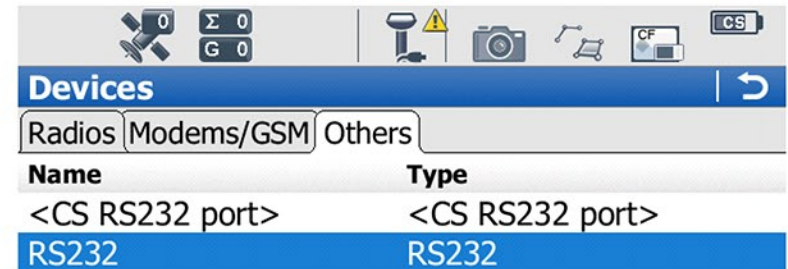
OK | | | Device.. | Page

# Connecting Viva controller to Bathylogger

## CS10/CS15 Settings

9. Press F6 to page to 'Others' and highlight 'RS232'.

10. Press F2 'New'.



# Connecting Viva controller to Bathylogger

## CS10/CS15 Settings

11. Create new 'Name', eg Bathylogger

12. Choose 'Baud rate' as 4800

13. Press F1 'Store'.

**New Device**

**Name:** Bathylogger

**Type:** RS232

**Baud rate:** 4800

**Parity:** None

**Data bits:** 8

**Stop bit:** 1

**Flow control:** None

Fn abc 10:11

**Store**